



# KIDDIE KICK



## OWNER'S MANUAL

**Read and understand this entire manual before  
allowing child to use this product!**

Item Numbers:

**Blue 132KK-BL**  
**Pink 132KK-PK**

# CONTENTS

Safety Warnings .....	1	Kiddie Kick Parts .....	4
Before You Begin .....	2	Warranty .....	6
Set-Up and Usage .....	3		

## SAFETY WARNINGS

**⚠ AN IMPORTANT MESSAGE TO PARENTS:** This manual contains important information. For your child's safety, it is your responsibility to review this information with your child and make sure that your child understands all warnings, cautions, instructions and safety topics. Razor USA recommends that you periodically review and reinforce the information in this manual with younger riders and that you are required to inspect and maintain your child's scooter to insure their safety.

**⚠ GENERAL WARNING:** Riding the Kiddie Kick can be a hazardous activity. Scooters can, and are intended to move and it is therefore possible to get into dangerous situations and/or lose control and/or fall. If such things occur you can be seriously injured or die. **LIKE ANY OTHER MOVING PRODUCT, USING A SCOOTER CAN BE A DANGEROUS ACTIVITY AND MAY RESULT IN INJURY OR DEATH EVEN WHEN USED WITH PROPER SAFETY PRECAUTIONS USE AT YOUR OWN RISK AND USE COMMON SENSE.**

- Always wear safety equipment such as helmet, knee pads and elbow pads. Always wear a helmet when riding your scooter and keep the chinstrap securely buckled.
- Always wear shoes.
- Ride on smooth, paved surfaces away from motor vehicles.
- Avoid sharp bumps, drainage grates, and sudden surface changes. Scooter may suddenly stop.
- Avoid streets and surfaces with water, sand, gravel, dirt, leaves, and other debris. Wet weather impairs traction, braking, and visibility.
- Do not ride at night.
- Avoid excessive speed associated with downhill rides.
- Adults must assist children in the initial adjustment procedures.
- Obey all local traffic and scooting laws and regulations.
- Watch out for pedestrians.
- **DO NOT EXCEED THE WEIGHT LIMIT OF 45 pounds (20kg).** Heavier riders are advised to purchase the Razor scooter which is designed for riders up to 220 pounds (100kg).
- The recommended rider age of 3 years and older for the Kiddie Kick scooter is only an estimate, and can be affected by the rider's size, weight or ability. Any child unable to fit comfortably on the Kiddie Kick scooter should not attempt to ride it.
- Rider weight does not necessarily mean a child's size is appropriate to fit or maintain control of the scooter.
- A parent's decision to allow his or her child to ride this product should be based on the child's maturity, skill and ability.
- Refer to the section on safety for additional warnings.

### ACCEPTABLE RIDING PRACTICES AND CONDITIONS

Direct parental supervision is required. The Kiddie Kick is meant to be used only in controlled environments free of potential traffic hazards and not on public streets. Do not allow your child to ride the Kiddie Kick in any areas where vehicle traffic is present. Child must maintain a hold on the handlebars at all times. Never allow more than one child at a time to ride the Kiddie Kick. Never use near steps, sloped driveways, hills, roadways, alleys or swimming pool areas.

Do not ride the Kiddie Kick in wet weather. The Kiddie Kick is intended for use on solid, flat, clean and dry surfaces such as pavement or level ground without loose debris such as rocks or gravel. Wet, slick or uneven and rough surfaces may impair traction and contribute to possible accidents. Do not ride a scooter in mud, ice, puddles or water. Avoid excessive speeds that can be associated with downhill rides. Never risk damaging surfaces such as carpet or flooring by use of a scooter indoors. Do not ride at night or when visibility is impaired.

### PROPER RIDING ATTIRE

Always ensure child is wearing proper protective equipment such as an ANSI, SNELL, CPSC or ASTM approved helmet. A helmet may be legally required by local law or regulation in your area. Elbow and kneepads are recommended. A child should always wear shoes, never ride barefooted or in sandals, and keep shoelaces tied and out of the way of the wheels.

**⚠ WARNING:** ALWAYS INSPECT SCOOTER PRIOR TO RIDING. Properly inspecting and maintaining your scooter can reduce the risk of injury. Always inspect your scooter before riding and regularly maintain it.

**⚠ WARNING:** CHECK LOCAL LAWS REGARDING SCOOTER USE. Check local laws and regulations to see where and how you may use your Razor scooter legally. In many states and local areas scooter riders are required BY LAW to wear a helmet. Check local laws and regulations regarding laws governing helmet use and scooter operation in your area.

**FAILURE TO USE COMMON SENSE AND HEED THE ABOVE WARNINGS FURTHER INCREASES RISK OF SERIOUS INJURY. USE AT YOUR OWN RISK AND WITH APPROPRIATE AND SERIOUS ATTENTION TO SAFE OPERATION. USE CAUTION.**

## BEFORE YOU BEGIN

Remove contents from box and check parts against part diagram below. Remove the foam separators that protect the components from damage during shipping. Inspect the contents of the box for scratches in the paint or dents that may have occurred during shipping. Because the Kiddie Kick was partially assembled and packed at the factory, there should not be any problems, even if the box has a few scars or dents.

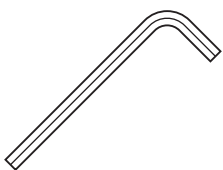
### **Estimated Assembly and Set-Up Time**

Adult assembly required.  
Allow up to 5–10 minutes for assembly.



### **Required Tools**

We recommend the use of mechanic's grade tools.



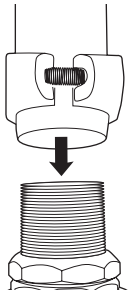
5mm  
hexagonal key wrench

**WARNING:** DO NOT USE NON-RAZOR PRODUCTS WITH YOUR SCOOTER.

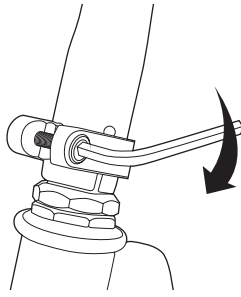
Razor scooters have been built to certain Razor design specifications. The original equipment supplied at the time of sale was selected on the basis of its compatibility with the frame, fork and all other parts. Certain aftermarket products may or may not be compatible. Consult your retailer or visit [www.razor.com](http://www.razor.com) prior to modifying or replacing any component with a non-factory specified product.

**Need Help?** Visit our web site for updates and a list of authorized service centers at [www.razor.com](http://www.razor.com) or call toll-free at 866-467-2967 Monday - Friday 8:00 AM - 5:00 PM Pacific Time.

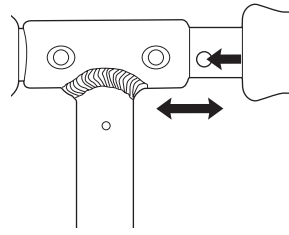
## SET-UP AND USAGE



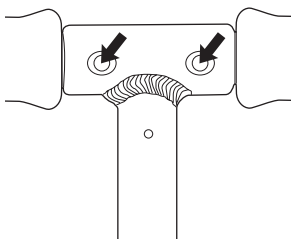
**1** Slide the steering tube assembly onto the exposed threads of the fork.



**2** With the front wheel pointed straight ahead and the handlebars square to the front wheel, tighten the clamp as shown. Tighten securely.

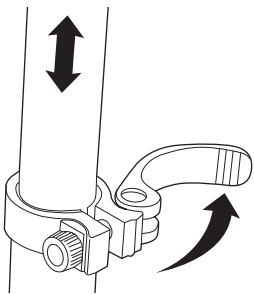


**3** Insert and secure the left and right handlebars by pressing the spring-loaded buttons and inserting them into the T-tube.

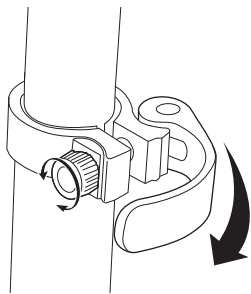


**4** Make certain the spring-loaded button engages the hole in the T-bar for each handlebar.

### Adjusting handlebar height



**1** To adjust the height of the handlebars, unlock the steering tube by pulling outward on the quick-release lever. Slide the T-tube to the desired position and secure by pushing inward on the quick release clamp.



**2** The tension of the quick-release clamping mechanism can be adjusted by tightening or loosening the Allen bolt. Be careful not to over-tighten. You should always be able to open and close the quick-release lever by hand and the T-tube should telescope freely with the quick-release open.

**! WARNING:** Failure to properly install and tighten the handlebar t-tube steering tube clamp may cause the rider to lose control and fall. Assembly must be performed by an adult with mechanical experience. If you do not understand these instructions or the concept of "tighten securely" seek the assistance of a qualified mechanic.

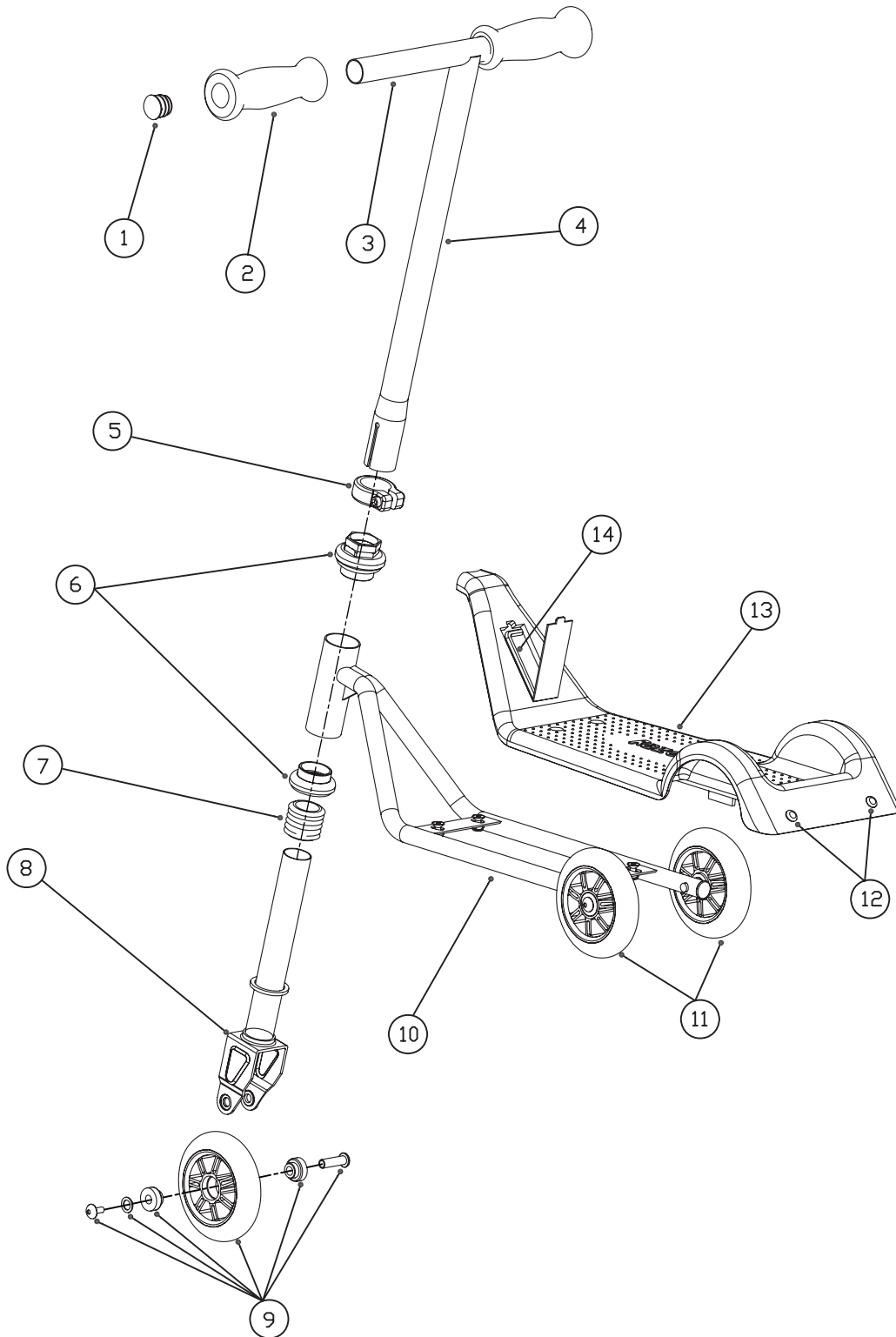
**! WARNING:** Failure to properly engage the spring-loaded buttons may cause the handlebars to dislodge while riding and may cause you to lose control and fall. When correctly engaged the handlebars will not rotate nor will they move sideways. Note that when properly engaged, the spring-loaded buttons are clearly visible in the holes on the T-tube.

**! WARNING:** Failure to properly engage the quick-release clamp may cause the T-tube to telescope up or down while riding which may cause you to lose control and fall. With the quick-release properly adjusted and engaged, the handlebars will not move up or down.

# KIDDIE KICK PARTS

Keep your Kiddie Kick running for years with genuine Razor parts. Visit our web site to purchase replacement parts.  
(Specifications subject to change without notice.)

- |                 |                |                    |
|-----------------|----------------|--------------------|
| 1 End Cap       | 6 Headset Part | 11 Rear Wheel Sets |
| 2 Grip          | 7 Boot         | 12 Tail Light      |
| 3 Handlebar     | 8 Fork Set     | 13 Deck            |
| 4 Steering Tube | 9 Front Wheel  | 14 Tool Kit        |
| 5 Down Clamp    | 10 Frame Sets  |                    |



**SB 1918 (CALIFORNIA) DECLARATION**

YOUR INSURANCE POLICIES MAY NOT PROVIDE COVERAGE FOR ACCIDENTS INVOLVING THE USE OF THIS SCOOTER/ELECTRIC VEHICLE. TO DETERMINE IF COVERAGE IS PROVIDED, YOU SHOULD CONTACT YOUR INSURANCE COMPANY OR AGENT.

## SAFETY REMINDERS

### PRE-RIDE CHECKLIST



#### Loose Parts

Check and secure all fasteners before every ride. Make sure the steering tube clamps, steering tube extension quick release, and handlebars spring buttons are locked properly in place before riding.



#### Replacement Parts

Replace worn or broken parts immediately. Call 1-866-GO-RAZOR for parts.



#### Safety Gear

Always wear proper protective equipment such as an approved safety helmet, elbow pads and kneepads. Always wear shoes (lace-up shoes with rubber soles), never ride barefooted or in sandals, and keep shoelaces tied and out of the way of the wheels.



#### Be Careful!

You will see people on TV and maybe even people you know doing tricks and stunts. These are people who have been practicing on scooters for a very long time. Don't try something until you are ready. Avoid steep inclines and don't ride too fast — you can lose control and fall. Skateboard parks are not designed for scooters. Never ride in traffic or on the street and watch your surroundings for pedestrians, bikers, boarders and skaters.

Maintain a hold on the handlebars at all times.



**DO NOT RETURN TO STORE**  
Failure to follow these instructions may damage  
your vehicle and void your warranty.

## WARRANTY

### Razor Limited Warranty

The manufacturer warrants this product to be free of manufacturing defects for a period of 6 months from date of purchase. This Limited Warranty does not cover normal wear and tear, tires, tubes or cables, or any damage, failure or loss caused by improper assembly, maintenance, or storage.

This Limited Warranty will be void if the product is ever

- used in a manner other than for recreation;
- modified in any way;
- rented.

The manufacturer is not liable for incidental or consequential loss or damage due directly or indirectly to the use of this product.

Razor does not offer an extended warranty. If you have purchased an extended warranty, it must be honored by the store at which it was purchased.

For your records, save your original sales receipt with this manual and write the serial number below.

Item Number:  
**Blue 132KK-BL**  
**Pink 132KK-PK**

**Need Help?** Visit our web site for updates and a list of authorized service centers at [www.razor.com](http://www.razor.com) or call toll-free at 866-467-2967 Monday - Friday 8:00 AM - 5:00 PM Pacific Time.

Printed in China for:  
Razor USA LLC  
PO Box 3610  
Cerritos, CA 90703

Copyright © 2003 - 2008 Razor USA, LLC. All rights reserved. RAZOR and the Razor Logo Design are among the registered trademarks of Razor USA LLC in the United States and/or select foreign countries.